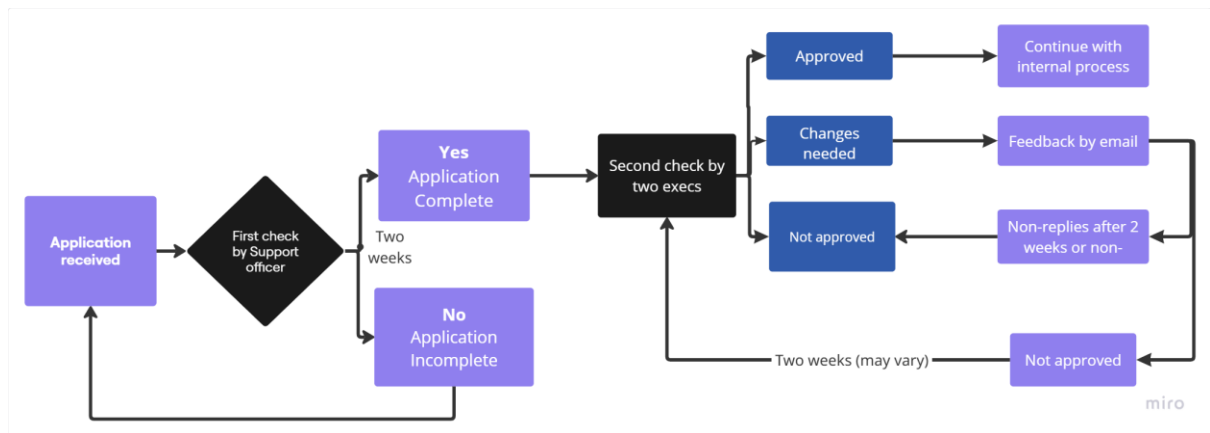


Applications for Geographic Group - Affiliates are now Open!



* Processing time may vary depending on the number and quality of the application (2-4 months)

The following criteria will be used in selecting new Affiliate Geographic Groups:

- The proposed group fills a geographic gap in which Cochrane currently has little or no presence, especially in LMIC* settings.
- The proposed group will fill a technical / dissemination gap (i.e., policy influence, impactful partnerships, capacity development, training, language translation, and material development).
- One or some of the proposed staff have worked with Cochrane previously and have Cochrane expertise.**
- Capacity to attend and participate in quarterly Geographic Group virtual meetings and other Cochrane events***

* Low- and Middle-Income Countries as defined by The World Bank: <https://datahelpdesk.worldbank.org/knowledgebase/articles/906519>

** Using and/or producing Cochrane resources and tools to access and utilize evidence-based healthcare information; partnership with existing Cochrane groups. Expertise in non-systematic reviews will be considered if the groups fill an important gap.

*** Directors are expected to attend & participate in four Geo Group meetings annually, or send a Deputy in their stead. Additionally, participation in Cochrane events and other regional meetings is encouraged.

All staff and signatories must read and agree to the terms of Cochrane's organizational policies:

- [Spokesperson](#)
- [Conflict of Interest](#)
- [Logo and Branding](#)
- [Collaboration Agreement](#)

Please send the following documents to kduquejacome@cochrane.org:

- 1 [Application form](#)
- 1 Future directors' Curriculum Vitae
- 1 Letter of Support from the host institution
- 1-2 Support letter from a person with Cochrane Experience or Systematic Review experience
- 1 Support letter for a Cochrane Group that will sponsor you (non-compulsory)

If you have questions or require assistance to fill the form, email kduquejacome@cochrane.org