

Quick ref guides

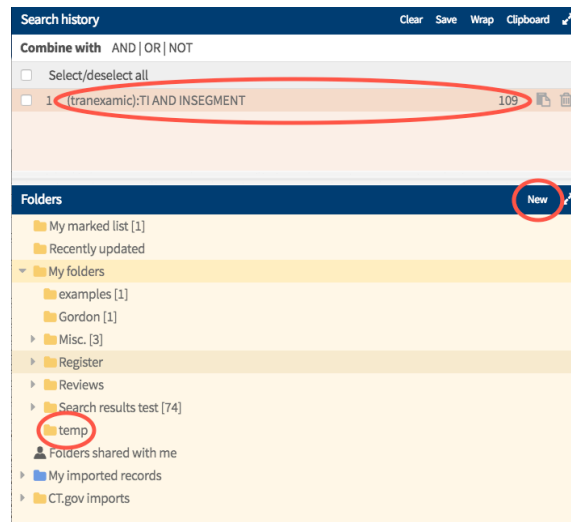
Send records to the Classifier

The Classifier in CRS Web is machine learning available from within CRS. It can provide you with a probability that a record is an RCT or relevant to the scope of your review group.

You can get Classifier Scores at both review group level and RCT, for any record from within CRS Web.

To send records to the Classifier your records need to be within a folder, either an imported one (blue) or one of your folders (orange).

If the records you want to send to the classifier are not in a folder then you may like to add records to a temporary folder by creating a new folder and dragging the records into it.



The folder can contain records that have scores along with those that do not.

To classify your folder of records simply select the folder and click Classify in the top right of the folder pane.

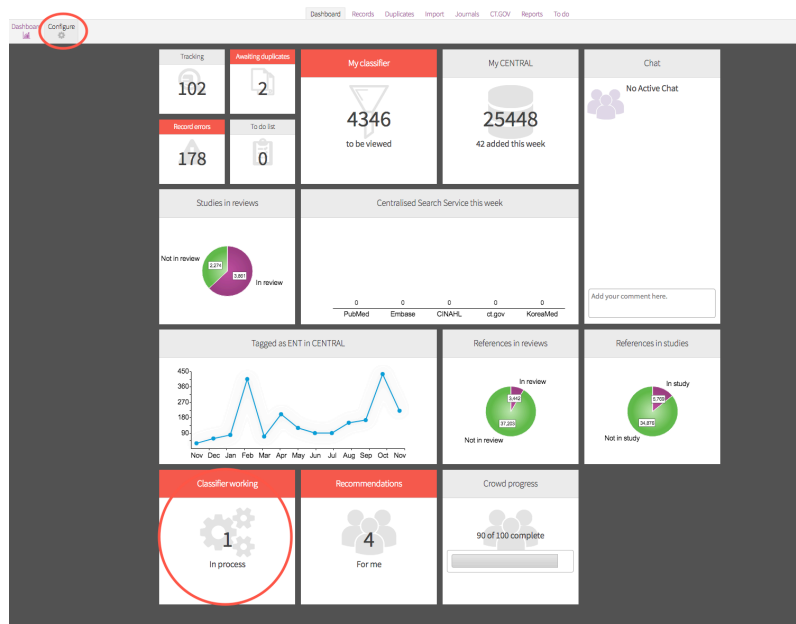


Remember you may need to look in the ellipse for the option.



You will be asked to confirm you would like to send these records.

This will take a few minutes to complete. You can see the progress on the Dashboard. If the widget is not on your dashboard you can add it via configure in the top left of the screen.



When it is complete you can go back to your folder.

You will then be able to view the classifier score for individual records from the Classifier tab, or for multiple records from the results tab by displaying these columns using the preferences.

The bar chart below shows the classifier scores for this record. A higher score means a higher likelihood that the record is of interest to the group. There is a 54% likelihood that this record is an RCT.

Legend: Not relevant to me, This is not an RCT, This is an RCT

Legend: In register, In segment, Not in segment

Category	Score
Not	94
RI	86
Review	44
IPPT	33
IRAC	26
DRAC	23
PRAC	13
IRAC	13
IPPT	11
IRAC	11
DRAC	11
IPPT	10
IRAC	9
IPPT	8
IRAC	8
IPPT	7
IRAC	7
IPPT	6
IRAC	6
IPPT	5
IRAC	5
IPPT	5

If you have any questions about using the Classifier tool, contact cis-support@cochrane.org.