

# Moving to 'Living' Stroke Clinical Guidelines

**LSR workshop**

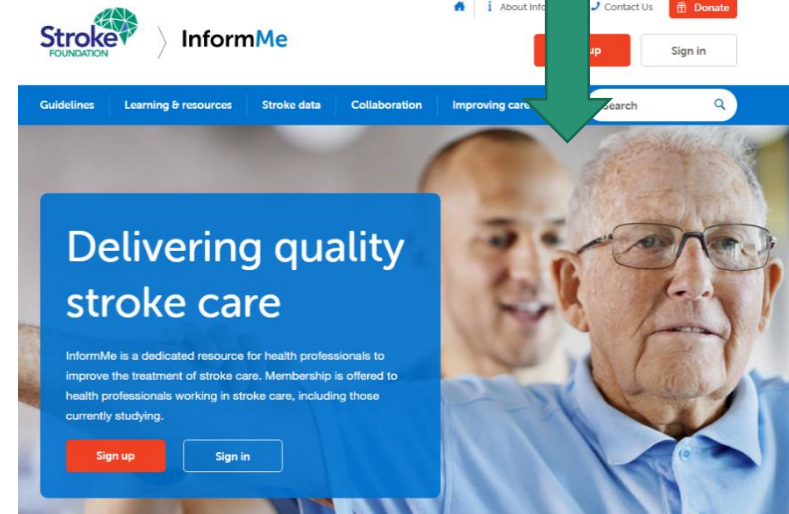
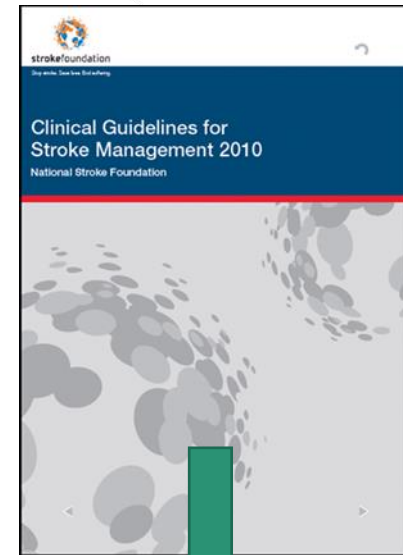
**Cochrane Colloquium**

**Kelvin Hill**

**[khill@strokefoundation.org.au](mailto:khill@strokefoundation.org.au)**

## Background

- National guidelines since 2003
- Collaborate internationally since 2006
- Normally 2 year updating cycle
- Advocating for living guidelines++
- Fourth update (2017) moved to using GRADE and online platform (MAGIC)
- Monitor use via national audit





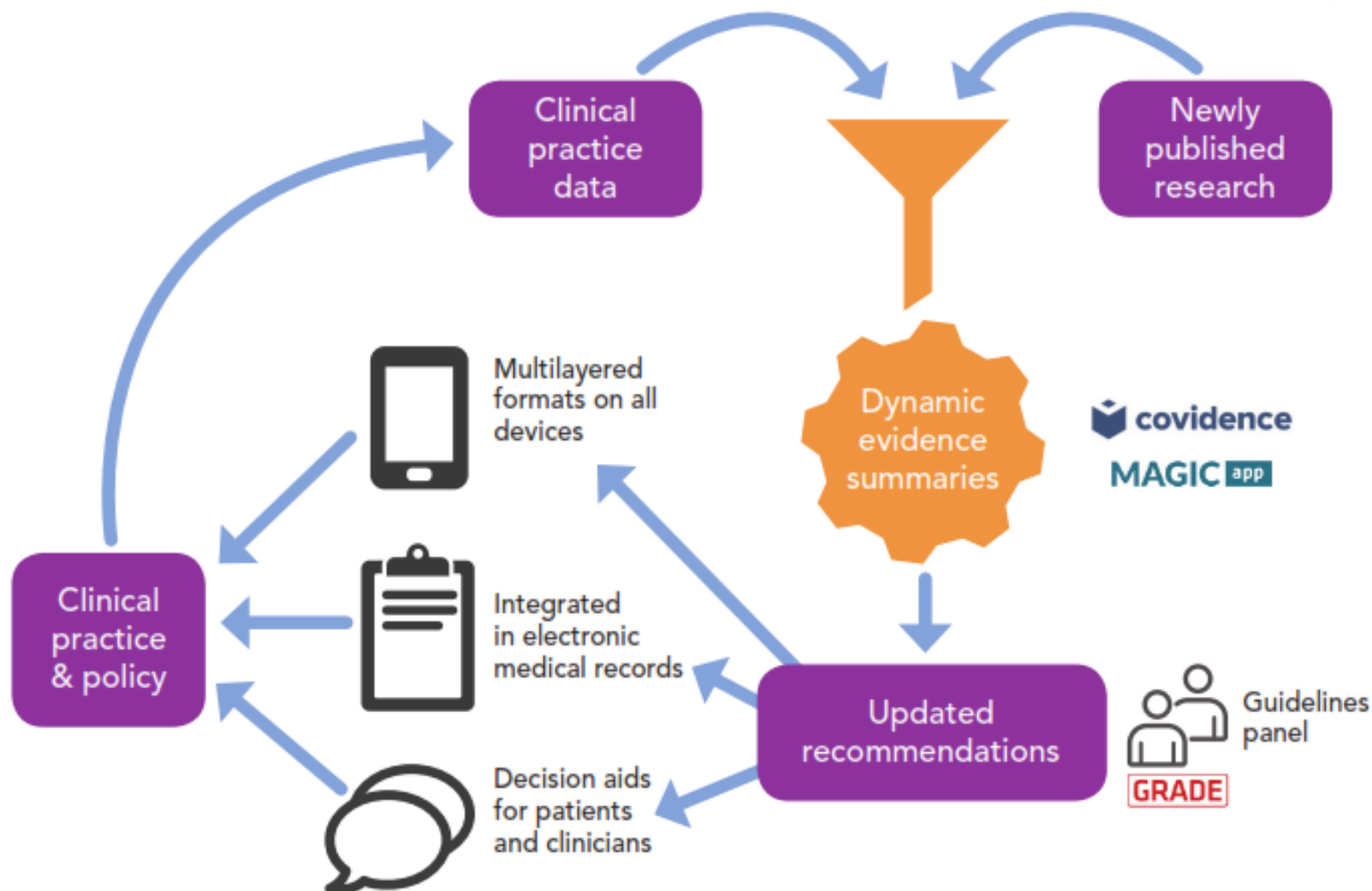




## Current project

- 3 year funding to develop and evaluate living guidelines
- Partnership with Cochrane Australia
- Evaluating processes and outcomes
- Initial planning underway including tech platform development, consumer involvement and KT

# Vision



# Tech opportunities and development

## Search

- Pubmed, DORIS, CENTRAL/CRS
- (regular feeds)

## Screen 1

- Classifiki, pipeline workflow (Crowd)
- (Stroke specific crowd tasks)

## Screen 2

- Covidence (DORIS)
- Living PRISMA flowchart, automatic full text retrieval

## Extract

- Covidence & MAGIC/others
- Better coordination of data across platforms

## Synthesis

- RevMAN
- Ability to manipulate forest plots to understand impact

# Tech opportunities and development

SoF

- MAGIC, RevMAN
- Dynamic update from RevMAN

Recs

- MAGIC
- (Patient decision support tools)

Dev GL

- MAGIC
- Ability to communicate changes

Publish

- MAGIC
- (Version control and communicate change)

# Other aspects of development

Search

- Patient values and preferences
- **KT literature?**

Screen 1

Screen 2

Extract

- ? Templates or ways of appraising data

Synthesis

- Additional qualitative or quantitative data collection



## Other aspects of development

### SoF

- GRADE profile specifically reports values/prefs

### Recs

- MAGIC – consumer involvement in discussions
- Ensure specific and actionable

### Dev GL

- Ensure all relevant details are noted (practical considerations)

### Publish

- Co-production of consumer products, shared decision making
- Shared decision support tools, CDS tools, clinical performance